

CORRECTION

Open Access

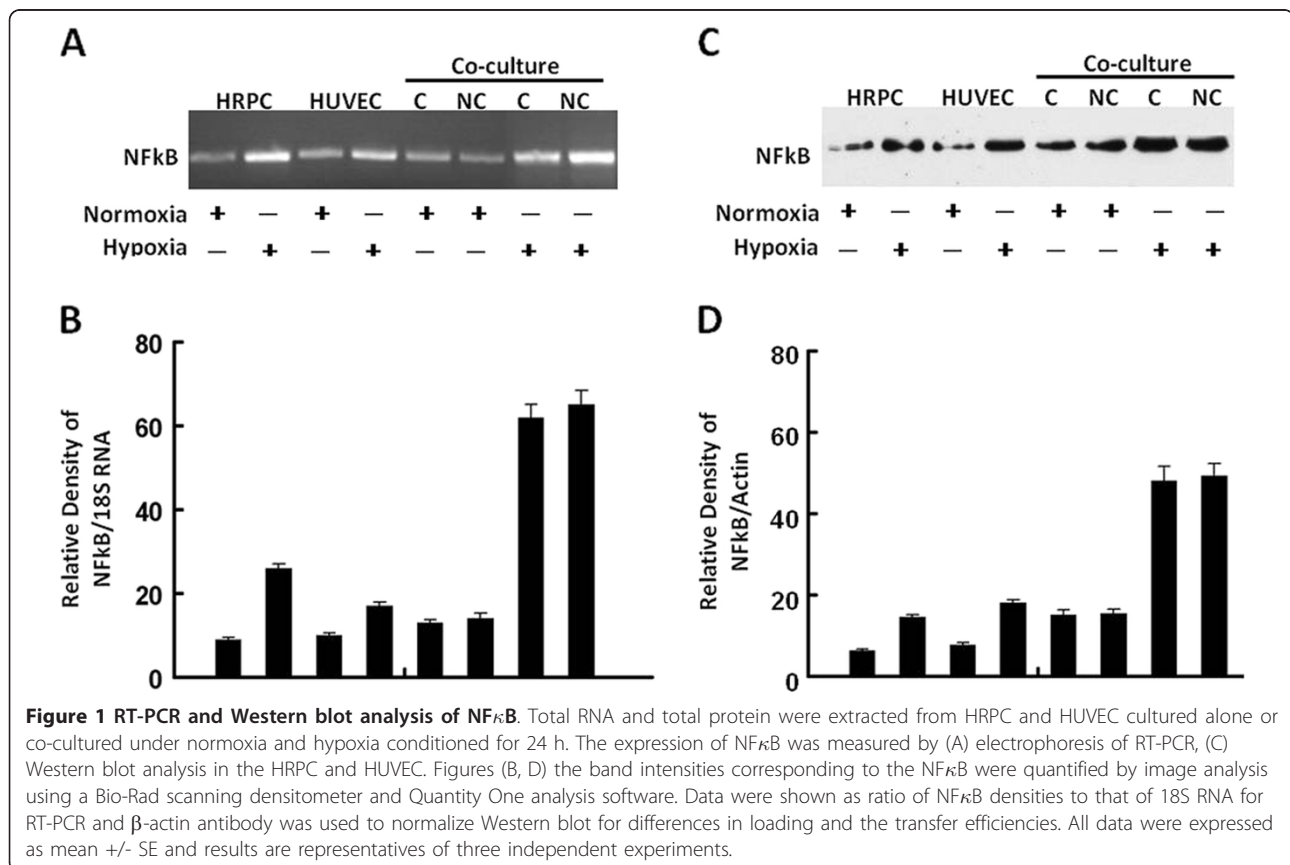
Correction: Co-culture of Retinal and Endothelial Cells Results in the Modulation of Genes Critical to Retinal Neovascularization

Ravindra Kumar^{1*}, Sandra Harris-Hooker², Ritesh Kumar³ and Gary Sanford¹

Correction

Following publication of our article [1] it was noted that Figures five E and five G were the same as

Figures six A and six B. Figure 1 in this correction article is the correct version of Figure six that should have been included in the original article [1].



* Correspondence: rkumar@msm.edu

¹Department of Microbiology, Biochemistry and Immunology, Morehouse School of Medicine, 720 Westview Drive, S.W., Atlanta, Georgia 30310, USA
 Full list of author information is available at the end of the article

We apologize for any inconvenience caused by this error.

Author details

¹Department of Microbiology, Biochemistry and Immunology, Morehouse School of Medicine, 720 Westview Drive, S.W., Atlanta, Georgia 30310, USA.

²Department of Pathology, Morehouse School of Medicine, 720 Westview Drive, S.W., Atlanta, Georgia 30310, USA. ³Undergraduate student, Department of Chemistry and Biochemistry, Georgia Institute of Technology, 901 Atlantic Drive, Atlanta, Georgia 30322, USA.

Received: 14 March 2012 Accepted: 26 March 2012

Published: 26 March 2012

Reference

1. Kumar R, Harris-Hooker S, Kumar R, Sanford G: **Co-culture of Retinal and Endothelial Cells Results in the Modulation of Genes Critical to Retinal Neovascularization.** *Vascular Cell* 2011, **3**:27.

doi:10.1186/2045-824X-4-6

Cite this article as: Kumar *et al.*: Correction: Co-culture of Retinal and Endothelial Cells Results in the Modulation of Genes Critical to Retinal Neovascularization. *Vascular Cell* 2012 **4**:6.

**Submit your next manuscript to BioMed Central
and take full advantage of:**

- Convenient online submission
- Thorough peer review
- No space constraints or color figure charges
- Immediate publication on acceptance
- Inclusion in PubMed, CAS, Scopus and Google Scholar
- Research which is freely available for redistribution

Submit your manuscript at
www.biomedcentral.com/submit

